



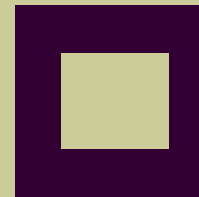
mastodon DIGITAL OBJECT NETWORK

mDON: The First Two Years

Walter E. Helmke Library
Indiana University-Purdue University Fort Wayne
August 2007

<http://mdon.lib.ipfw.edu/>

A Message from the Chair of the Digital Initiatives Group, Cheryl Truesdell



Why ...

A recent article in *EDUCAUSE Review* outlines the challenges for academic libraries now and in the future. Its author, Jerry Campbell, identified several creative services that may “prove to hold the key to the future of the academic library.” Among the services listed are creating metadata, collecting and digitizing archival materials, and maintaining digital repositories. (“Changing a Cultural Icon: The Academic Library as a Virtual Destination” *EDUCAUSE Review*, January/February 2006, pp. 16-30).

Two years ago the library purchased CONTENTdm, a digital collections management software, to move Indiana University-Purdue University Fort Wayne (IPFW) to the next level of library services by providing access worldwide, 24/7 to digital collections that document the history and development of IPFW and northeast Indiana. Most of the past two years have been focused on learning the software and developing expertise in the digital process. Staff are now trained and have acquired expertise above and beyond some libraries that instituted digital programs long before IPFW.

mDON, Mastodon Digital Object Network is the name of IPFW’s digital library and this is a report on the evolution of mDON and highlights of its current and upcoming collections.

“...mission of mDON: ...to create and provide access to digital collections that foster an understanding and appreciation of IPFW, Fort Wayne, and northeast Indiana.”

mDON Timeline

Summer 2005 ~
Helmke Library purchased CONTENTdm to build digital library

September 2005 ~
IPFW’s pilot project using CONTENTdm was the digitization of some of Fort Wayne’s Economic Development documents.

October 2005 ~
Proposed to vice chancellor for academic affairs that Library host IPFW audio portal using CONTENTdm

January 2006 ~

- ◆ Helmke Library chooses mDON as the name for its Digital Library Collections
- ◆ IPFW Public tions enlisted to help with mDON home page design and headers and footers
- ◆ Chair of Department of Music, Robert Bean, agrees to contribute recordings of concerts for the audio pilot project
- ◆ Library begins developing grant proposal with Allen County-Fort Wayne Historical Society

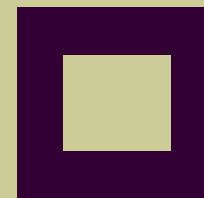
May 2006 ~
Obtained five men’s volleyball games to add to audio portal

June 2006 ~

- ◆ University Archives Photo Gallery, Men’s Volleyball Play-by-Play and Concert Selections from Department of Music metadata teams established and working

July 2006 ~

- ◆ University Archives Photo Gallery launched
- ◆ Established metadata team for OnStage at IPFW collection
- ◆ LSTA grant for “That Glorious Gate” awarded to IPFW, metadata consultant hired to provide metadata for project
- ◆ IUPUI under contract to digitize large maps



mDON Mission, Goals, Audience, and Scope

Mission

mDON is an initiative of the IPFW Helmke Library to create and provide access to digital collections that foster an understanding and appreciation of IPFW, Fort Wayne, and northeast Indiana.

Goals

- ◆ Manage a digital archive of representative works showcasing IPFW's scholars, performers, athletes, academic and administrative units, community partners, and guests.
- ◆ Encourage collaboration and cooperation between the IPFW Helmke Library, other IPFW units, and local historical and cultural institutions in support of IPFW's goal to "advance the quality of life in Fort Wayne and northeast Indiana."
- ◆ Provide leadership in developing digital resources and establishing best practices.
- ◆ Provide global access to uniquely held resources, including WorldCat, Indiana Memory Project, and others.
- ◆ Enhance accessibility through thematic coherence, attractive presentation, meaningful description, and standardized formatting for display.

mDON Timeline continued...

August 2006 ~

- ◆ Work on design of University Photo Gallery, Concert Selections, Men's Volleyball Web pages
- ◆ Identify Mike Downs Center for Indiana Politics/American Democracy Project as first video collection

September 2006 ~

mDON live and demonstrated at first meeting of the University Council

October 2006 ~

- ◆ mDON priorities set: "That Glorious Gate;" IPFW University Archives Photo Gallery; Concert Selections; Fort Wayne Economic Development; OnStage at IPFW; Mike Downs Center for Indiana Politics/American Democracy Project

November 2006

- ◆ Began Web page design and bookmark design for "That Glorious Gate"

February 2007 ~

- ◆ Met with Allen Count-Fort Wayne Historical Society to develop LSTA grant on the Miami Indians in northeast Indiana
- ◆ Began to design collection page for OnStage at IPFW collection

May 2007 ~

- ◆ "That Glorious Gate," first History Center Digital Collections launched to public
- ◆ LSTA grant for "History of the Miami Indians in Northeast Indiana" awarded to IPFW

June - August 2007 ~

- ◆ Began new online exhibit of the Student Art in the Library program
- ◆ Completed the design for the OnStage@IPFW collection and prepared for launch in September
- ◆ Converted Arts & Sciences Distinguished Lecturer Series to digital format

mDON Audience and Scope

Audience

The intended audience of mDON is first and foremost IPFW faculty, students, staff, and alumni, and, secondly, the citizens of Indiana, students, and scholars.

Scope

mDON provides access to collections that document the history and development of IPFW and northeast Indiana. The assembled collections include a variety of document and media types including photographs, music, video, letters, artifacts, maps, books, artwork, etc. from diverse sources ranging from the IPFW Departments of Music and Theatre to the archival collections of community partners such as the Allen County-Fort Wayne Historical Society.

Origin of mDON logo and name...

Over coffee at the Old Crown Coffee Roasters the newly formed Helmke Library Digital Initiatives Group brainstormed a name for its fledgling digital library. In a flash of brilliance the group chose mDON: Mastodon Digital Object Network. A tagline was developed by IPFW's Publications' Creative Director, Lea Ann Powers, "Preserving Information from Extinction." The mastodon, an extinct version of the modern elephant, is IPFW's mascot. As noted on the mDON home page, "IPFW's mastodon mascot serves to remind us of the perils of environmental change. As the environment for information evolves, the mastodon DIGITAL OBJECT NETWORK at IPFW will preserve the prolific work of our scholars, performers, athletes, guests, and community partners." Once the name and concept was chosen, the Digital Initiatives Group began working with library information technology services and the campus graphic and Web designers to create the look and feel of the home page, secondary pages, header and footers, and site



mDON Evolution

In September 2005 IPFW Helmke library launched its pilot project with the digitization of Fort Wayne Economic Development documents. JoAnn Arnold as a consultant, was hired, and a library science intern, Amy Bailey, was secured, to learn CONTENTdm and develop best practices for building digital collections. By December 2005, they had built a test collection of documents in CONTENTdm. In addition, they had documented a plan of action for digitizing all Fort Wayne economic development documents, best practices for digitizing and entering metadata into CONTENTdm, and their experiences in cataloging, scanning, assigning metadata, and other project-related issues.

“Helmke Library demonstrated its unique qualifications to manage the campus digital, audio, and video archive. Librarians are trained to organize and describe information for optimal retrieval, and the library has managed the university’s physical archive for many years.”

At the same time Larry Griffin, university archivist, began to experiment with CONTENTdm to create a digital collection of photographs from the university archives. Upon his retirement this project was transferred to Denise Buhr, interim archivist. The best practices recommended by the Fort Wayne Economic Development pilot test were applied retrospectively to this collection.

In the meantime, IPFW’s Vice Chancellor for Academic Affairs (VCAA), Susan Hannah, identified the need to create an audio portal for campus intellectual, cultural, and social events. Helmke Library stepped forward with a proposal outlining its unique qualifications to manage the campus digital, audio, and video archive. Librarians are trained to organize and describe information for optimal retrieval and the library has managed the university’s physical archive for many years. By January 2006, after meetings with other IPFW departments, the library was established as the campus audio portal archive for recordings of IPFW activities.

In April 2006 VCAA Hannah gave Helmke Library a small grant to develop a test collection for the audio portal. Cheryl Truesdell began working with the IPFW Department of Music to identify an audio collection of selected faculty and student concerts. This collection provided several valuable learning opportunities. University contracts addressing copyright issues for Internet transmission of campus concerts were located, examined and put on file for future use, Helmke Library CONTENTdm technical support personnel developed an unique presentation of the audio and metadata at the same time, and the library established its first working partnership with an academic department to showcase student and faculty achievements.

mDON Evolution

Experiences gained from this first audio collection enabled the library to set standards, develop procedures, and create display formats for use in subsequent audio collections

In May 2006 a second audio collection was selected. This collection included the audio portion of the IPFW's College Cable Access Center's video recording of selected matches from the IPFW nationally ranked, men's volleyball 2005-06 season. This collection was interesting in that the audio was stripped from the video to create the action-packed audio play-by-play. Like the Department of Music's concert collection, an IPFW Men's Volleyball play-by-play metadata team was established, and work commenced to create metadata dictionaries and guidelines, establish authority files, deal with technical difficulties, and design the public interface.

By the end of June 2006, the library had identified a list of additional audio portal digital projects for 2006-07. These included the Mike Downs Center for Indiana Politics/American Democracy Project programs 2003-05; IPFW School of Arts and Sciences Distinguished Lecturer Series 1997-2005; *IPFW Up Close* interview Series 1990-2005; and University Religious Forum 1991-2005.

At this time all collections were still in the development database and had not been released to the public. The IPFW Chancellor's first University Council meeting of the fall semester was chosen as the target date to launch mDON to the public. Teams worked on quality control of images, sound, and metadata; building the Web site architecture and navigation; designing the Web interface; and selecting photographs, icons, and graphics for the pages. All four collections were made available to the public in fall 2006 – IPFW University Archive Photo Gallery, Fort Wayne Economic Development documents, IPFW Department of Music Concert Selections, and IPFW Men's Volleyball play-by-play. The demonstration of the Men's Volleyball audio play-by-plays was a big hit with the University Council.

By the end of 2006 the mDON teams had begun working on two additional collections, OnStage at IPFW, the Purdue-Indiana Theatre (PIT) archives 1964-2000, and the Mike Downs Center for Indiana Politics/American Democracy Project lecture programs. The OnStage collection posed a unique challenge in collecting and digitizing three types of text materials for each play—play program, photographs, and miscellaneous documents such as letters, newspaper articles, memos, etc. The Mike Downs Center for Indiana Politics/American Democracy Project programs marked another first for mDON. In the early days of discussion on the audio portal, it was decided that launching video was not feasible due to the size of the files and local bandwidth limitations.

In January 2006 Helmke Library began working on its first collaborative project with a non-IPFW partner. The library and Allen County-Fort Wayne Historical Society were awarded an LSTA grant of over \$25,000 to fund the digitization of 160 maps, and 240 pieces of archival, ephemeral, and photographic materials, including prints, letters, flyers, certificates, tickets and other items. Entitled "That Glorious Gate" after Chief Little Turtle's famed denotation of his tribe's ancestral homelands, this collection seeks to enhance the Historical Society's extensive outreach program to elementary and secondary schools on the impact of location on the confluence of three rivers to the founding and development of Fort Wayne.

mDON Evolution

However, after some experimentation it was decided that video could be offered to the public without compromising access to the collection. The Mike Downs Center digital tapes were converted to DVD, and a metadata team began working on describing the collection.

In 2007 the mDON teams continued to build the University Archives Photo Gallery, OnStage at IPFW, Concert Selections from the Department of Music, and the Mike Downs Center for Indiana Politics/American Democracy Project. "That Glorious Gate" was launched to the public in May 2007 as the first of the History Center's Digital Collections. Helmke Library and Allen County-Fort Wayne Historical Society submitted another grant to the Indiana Memory Project on the Miami Indians in Northeast Indiana. It was awarded in June 2007. In addition, work began on the Student Art In the Library online exhibition, and conversion of the Arts and Sciences Distinguished Lecturer Series to digital.

The library's mDON teams have learned a lot about all aspects of creating digital collections. It is also apparent that more resources will be necessary to keep the current projects going and to continue to add new collections. In the coming year the Library will develop a process to accept new collections and explore funding opportunities.

mDON Lessons Learned

In the last two years the library gained a significant amount of experience building digital collections. During a workshop on digital collection management, the presenter recommended that libraries always begin with a simple project such as photographs. IPFW had jumped in with both feet creating collections of the most complex type, compound text documents, large maps, and, audio and video files. mDON teams grappled with a host of technical issues from multiple lost files, compound object manipulation, display image types, maximum image display for maps, and OCR functionality. Team members acquired new skills and knowledge while developing metadata. While the VCAA continued to support the mDON audio portal, now named mCAST, Helmke Library continued to struggle with the frustration of not having enough resources, personnel, and money to accomplish its goals.

Valuable mDON Lessons Learned

- ◆ Projects take longer than anticipated
- ◆ Project setup is absolutely necessary before any digitizing begins
- ◆ Mission, goals, audience, and scope of each collection is crucial
- ◆ Items need to be selected before the project begins
- ◆ Metadata is the most time-consuming part of the digital project
- ◆ Learning software limitations is essential
- ◆ Develop a standard workflow and quality control routine
- ◆ Web design and presenting the collections as a coherent package should not be overlooked

mDON Collections

mDON, the mastodon Digital Object Network, consists of four collection categories :

- Library and University Projects
- mCAST, Sights and Sounds of IPFW
- Faculty and Student Research Projects
- Community Projects

Each collection fits one or more of the content requirements for mDON:

1. Content documents the intellectual, cultural, and social life of IPFW
2. Content documents the history and development of northeast Indiana
3. Content features resources that are unique, rare or of special interest, e.g., manuscripts, diaries, letters, maps, government documents, photographs, video and audio recordings, and born digital documents
4. Content needs preservation due to heavy use and subsequent deterioration of the original format
5. Content supports teaching and classroom learning not already available digitally

In addition each collection meets one or more of the selection criteria for adding material to mDON:

1. Materials are not available from another digital repository or through digital commercial publications
2. Materials in the collection are identified, adequately described, and can be formed into a coherent unit
3. Audience is identifiable and sufficiently broad to warrant project costs and efforts
4. Digitization of materials fulfills a preservation, accessibility, curriculum, research, or information need
5. Materials are freely available to students, faculty, and the general public
6. Adequate support, including funding and personnel, is available for digitizing, metadata creation, file storage, and other special costs associated with the project

Library and University Projects

These collections are created by IPFW academic departments, administrative units, or the Helmke Library. They document the intellectual, cultural, and social life of IPFW.

IPFW University Archives Photo Gallery

The IPFW University Photo Gallery representing the visual history of IPFW is an ongoing project. There are approximately 1,500 to 2,000 photos in the University Archives (this does not include the University Relations' photo library) that reflect the history of IPFW from its beginning as two separate extension programs in various downtown locations to its current combined university located on the banks of the St. Joseph River. The database includes images of people, places, academics, athletics, and events. The goal is to add 40 photographs per month to the collection. As of August 2007 there were 163 photos in the Photo Gallery.

Team: Project Coordinator – C. Truesdell; Content Manager and Metadata Librarian – D. Buhr; Metadata Cataloger – J. Leone; Scanner – G. Fredrick; CONTENTdm Tech Support – D. Lin.

URL: <http://photo-gallery.mdon.lib.ipfw.edu>

Coming...

OnStage at IPFW

OnStage at IPFW is a collection of theatre programs, photographs, and other materials related to IPFW's long theatre history. When Indiana University and Purdue University opened a combined Fort Wayne campus in 1964, Purdue-Indiana Theatre (PIT) was established. In 1993, the Department of Theatre moved into its new home, Williams Theatre, and the original space in Kettler Hall, renamed the Studio Theatre, is now used for small-scale productions. In order to preserve the history of PIT this collection will include a representative selection of material, as available, from all productions in each season, including summer shows and student-directed plays. This collection will debut with one season of plays from each decade since the 1960s

Team: Project Coordinator - C. Truesdell; Content Manager and Metadata Librarian - D. Buhr; Metadata Cataloger – J. Leone; Scanner – G. Fredrick; CONTENTdm Tech Support – D. Lin; Web page design – P. Nowak.

URL: <http://onstage.mdon.lib.ipfw.edu>

From the IPFW University Archives Photo Gallery



Title: Students Strolling Campus
Photographer/Photographic Studio: Unknown
Subject Category: Buildings and Grounds; Campus Life
Subject (LCSH): Buildings--Indiana--Fort Wayne; Walking
Area: Library and University Projects
Description: Unidentified students walk past the Walter E. Helmke Library on the Indiana University-Purdue University Fort Wayne Campus. The Walter W. Walb Student Union is seen in the background.
Date of Original: 1981
Content Type: Still image; Photograph
Original Format: Photographic print, black and white, 8 x 10 inches; Label on top of photograph "S-66 no neg. Students on Campus 1981"; Handwritten on back of photograph "IPFW"
Digital Format: image/jpeg
Date Digitally Created: 2006-09-17
Digital Publisher: Walter E. Helmke Library, Indiana University-Purdue University Fort Wayne
Repository: IPFW University Archives
Rights: Copyright Indiana University- Purdue University Fort Wayne, 2006. All rights reserved. May not be reproduced without permission.
Identifier: 30000094560467

mCAST: Sights and Sounds of IPFW

This area includes audio and video recordings of IPFW activities, including concerts, lecture series, and IPFW athletics.

Concert Selections – IPFW Department of Music

The IPFW Department of Music's audio performances include selections from its student recitals, Faculty Artist Series, extensive ensemble series, and other concerts. The ensemble series includes the University Singers, Chamber Singers, Opera Ensemble, Symphonic Wind Ensemble, IPFW Community Orchestra, Guitar Ensemble, Jazz Ensemble, Percussion Ensemble, and a variety of chamber ensembles. The collection currently offers eight concerts with more in the queue waiting to be added. This collection is selected by the IPFW Department of Music and represents examples of some of their best work.

A feature of IPFW's audio collections is the initiation of the sound file when the metadata is displayed. This unique auditory effect was created by Helmke Library's technical support staff to enhance the accessibility of metadata while the audio is playing.

Team: Project Coordinator - C. Truesdell; Content Manager and Metadata Librarian – Amy Bailey and J. Leone; Scanner – G. Fredrick; CONTENTdm Tech Support – D. Lin; LITS Support – K. Fredrick.

URL: <http://concert-selections.mdon.lib.ipfw.edu>

Title: Choral Ensemble -- October 24, 2003

Alternative Title: Fall Choral Concert; Water Music

Presenter: Indiana University-Purdue University Fort Wayne Department of Music

Performance Date: October 24, 2003

Performance Location: Neff Recital Hall, Indiana University-Purdue University Fort Wayne (Fort Wayne, Ind.)

Contents:

Track 1: The Silver Swan / Orlando Gibbons (1:25)

Track 2: Super flumina Babylonis / Giovanni Pierluigi da Palestrina (3:59)

Track 3: By the Waters of Babylon / Edwin Fissinger (5:58)

Track 4: Placido e il mar (from Idomeneo) / W.A. Mozart (2:54)

Track 5: Cloudburst / Eric Whitacre (7:09)

Track 6: The Wreck of the Steamship Ethie / arr. Donand Patriquin (3:14)

Track 7: The Banks o' Doon / James Mulholland (3:45)

Track 8: Tece, voda tece / arr. Deems Taylor (4:24)

Track 9: Away from the Roll of the Sea / Allister MacGillivray (3:17)

Track 10: Marianne / arr. Philip Wilby (2:44)

Track 11: Loch Lomond / arr. Jonathan Quick (4:37)

Track 12: Wade in the Water / arr. Rosephanye Powell (4:01)

Track 13: America the Beautiful / arr. James Mulholland (6:05)

Performer: Choral Ensemble; University Singers; Chamber Singers; Todd O. Prickett; Karen Taylor; Jana Henly; Matt

Johnson; Kami Fiechter; Allen Saunders; Curtis Shaw; Elizabeth Keefer; Melissa Junkin

Subject Category: Chamber Singers; University Singers

Subject: Choruses

Area: Audio Portal; Library and University Projects

Content Type: Sound; Audio; Text

Source: Created from a compact disc provided by the Indiana University-Purdue University Fort Wayne Department of Music

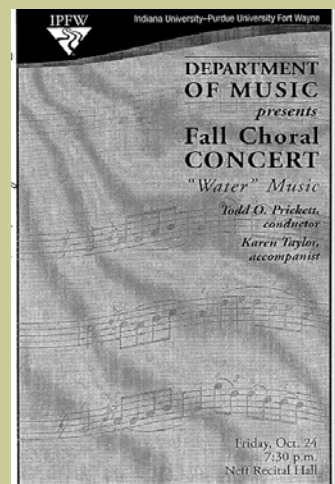
Rights: Copyright Indiana University-Purdue University Fort Wayne, 2006. All rights reserved. May not be reproduced without permission. To request permission: <http://mdon.lib.ipfw.edu/48.0.html>

Digital Format: audio/wma; text/pdf

Digital Publisher: Walter E. Helmke Library, Indiana University-Purdue University Fort Wayne

Date Digitally Created: 2006-05-02

Identifier: 30000094560467



mCAST: Sights and Sounds of IPFW

IPFW Men's Volleyball Play-by-Plays

This collection includes the audio portion of the College Cable Access Channel 5 video recording of selected matches from IPFW's nationally ranked men's 2005-06 volleyball season. The play-by-plays were created by stripping the audio from the video, which provides the excitement and action-packed feeling of old radio baseball broadcasts. Currently this collection includes play-by-plays of five of the final games of the season. The library has no plans to add to this collection at this time.

Team: Project Coordinator and Content Manager - C. Truesdell; Metadata Librarian and Cataloger - J. Leone; CONTENTdm Tech Support - D. Lin, LITS Support - K. Fredrick.

URL: <http://mens-volleyball.mdon.lib.ipfw.edu>

COMING...

Mike Downs Center for Indiana Politics

This collection features video recordings of Mike Downs Center for Indiana Politics and American Democracy Project programs, including documents associated with the programs. It will also include audio files of pieces broadcast through WBNI, the local public radio station. This collection is the first to offer video files through mDON. Currently, ten digital tapes have been converted to DVD and the team is working on the metadata for the videos and the scanned accompanying programs. This collection will be launched to the public during spring 2008.

Team: Project Coordinator - C. Truesdell; Content Manager - Andy Downs, Director, Mike Downs Center for Indiana Politics; Metadata Librarian - F. Mugambi; Metadata Cataloger - J. Leone; Scanner - G. Fredrick; CONTENTdm Tech Support - D. Lin; LITS Support - K. Fredrick.

Arts and Sciences Distinguished Lecturer Series

The IPFW College of Arts and Sciences has sponsored a Distinguished Lecturer Series since 1982. College Cable Access has a videotape library, which includes most of these lectures from 1997 to the present, with a few from the earlier years. There are normally two lectures per year—a visiting lecturer in the fall and an IPFW distinguished faculty lecturer in the spring. The debut collection will include all videos available from this series (approximately 20 at this time) and any printed programs or materials. Videos of current programs will be added as they become available. Helmke Library is currently converting digital tapes to DVD. This collection should be ready to be launched by summer 2008.

Team: Project Coordinator and Content Manager - C. Truesdell; Metadata Librarian - F. Mugambi; Metadata Cataloger - J. Leone; Scanner - G. Fredrick; CONTENTdm Tech Support - D. Lin.

Faculty and Student Research Projects

iBidX

iBidX, the IPFW Faculty Scholarly Works Database, is a searchable database of scholarly and creative works produced by IPFW faculty and administrative staff, past and present. Featured in the database are works, including, but not limited to books, journal articles, book chapters, conference presentations, patents, artistic works, performances, exhibits, and instructional materials.

This bibliographic database is a work in progress and is in no way complete. The original release of iBidX includes faculty-authored books available in IPFW's Helmke Library and scholarly and creative works reported for 2004 and 2005. iBidX is a service of the Office of Research and External Support and Helmke Library.



Team: Project Coordinator and Content Manager – J. Violette and Office of Research and External Support; LITS Support – K. Fredrick; University ITS support.

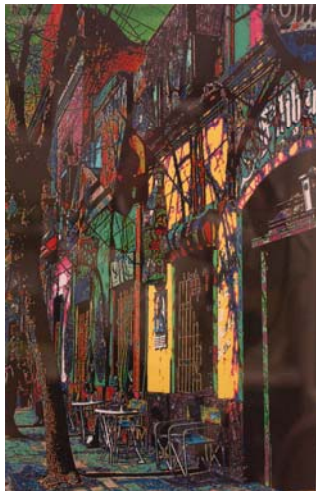
URL: <http://ibidx.ipfw.edu/>

COMING...

Student Art in the Library

This collection will include images from the Student Art in the Library exhibitions scheduled for each spring, summer, and fall. The first Student Art in the Library exhibition was held in spring 2007. The collection includes digital images of pieces selected for exhibition and metadata provided by the artist and IPFW metadata cataloger.

The collection will debut in December 2007 and include images from the spring, summer, and fall 2007 exhibitions.



Team: Project Coordinator - C. Truesdell, Content Manager – J. Patterson, D. Buhr and Student Art in the Library Committee; Metadata Cataloger – J. Leone; CONTENTdm Tech Support – D. Lin.

URL: <http://sail.mdon.lib.ipfw.edu>

Community Projects

This area features collections related to the history and culture of northeast Indiana. These collections are produced by IPFW alone or in collaboration with local partners, and includes links to collections by local libraries.

Fort Wayne Economic Development

The Fort Wayne Area Economic Development digital collection highlights planning and economic development documents and reports, maps, and data for Fort Wayne and northeast Indiana. This collection served as the pilot project for mDON, and is a collaborative project between the IPFW Community Research Institute and Helmke Library. Currently there are 31 full documents in the collection.

Team: Project Coordinator – J. Arnold; Content Manager – J. Violette; Metadata Librarian – A. Bailey; Scanner – G. Fredrick; CONTENTdm Tech Support – D. Lin.

URL: <http://mdon.lib.ipfw.edu/43.html>

History Center Digital Collections - “That Glorious Gate”

Helmke Library’s first collaborative digitization project with the Allen County-Fort Wayne Historical Society is entitled “That Glorious Gate” after Chief Little Turtle’s famed denotation of his tribe’s ancestral homelands. Funded by the Library Services and Technology Act (LSTA) through the Indiana State Library, “That Glorious Gate” includes the digitization and public display of 160 maps, a tantalizing slice of the Society’s 453 maps.

Also included in the project are 240 pieces of archival, ephemeral, and photographic materials, including prints, letters, flyers, certificates, tickets and other items sampling the Society’s rich collection related to its interpretive theme of “Location.” The historical scope of the above-mentioned maps and associated pieces digitized through this project range from some of the earliest cartographic depictions of our area from the mid-18th century to maps of today. These include the spectrum of contents from standard geographical detailings of waterways and elevations, to the various and continuing transportation booms of the 19th and 20th centuries, to representations of historical lifestyles and cultural developments. Through “That Glorious Gate,” IPFW and the Historical Society have established the template for future digitization collaborations and additional digital collections.



Team: Project Coordinator—J. Violette; Project Manager and Metadata Librarian - J. Arnold; Content Manager—T. Pelfrey; Scanner – G. Fredrick; CONTENTdm Tech Support – D. Lin.

URL: <http://acfwhs.lib.ipfw.edu/about.php>

Community Projects

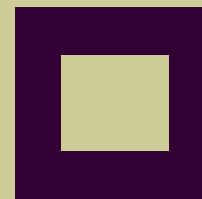
Coming...

History Center Digital Collections — The Miami Indians in Northeast Indiana

The “The Miami Indians in Northeast Indiana” project focuses on creating digital images of approximately 700 archival materials, artifacts, and other historical pieces related to the history of the Miami Indians and related non-Native peoples in northeast Indiana. The Miami Indians were one of the largest Native American tribes in the Great Lakes Region and became one of the most powerful opponents of the early United States. This digital collection will complement and build upon IPFW’s 2006 LSTA grant, “That Glorious Gate,” which funded the digitization of maps and other materials from the Allen County-Fort Wayne Historical Society related to the impact of location on the confluence of three rivers to the founding and development of Fort Wayne.

Team: Project Coordinator – C. Truesdell, Project Manager and Metadata Librarian – J. Arnold, Content Manager – T. Pelfrey, Scanner – G. Fredrick, Digital Photographer – Jamia Alexander, CONTENTdm Tech Support – D. Lin.

mDON Collaborators and Contributors



Allen County-Fort Wayne Historical Society

College Cable Access

Indiana State Library

IPFW Athletics

IPFW Chancellor

IPFW College of Arts and Sciences

IPFW College of Visual and Performing Arts

IPFW Community Research Institute

IPFW Department of Fine Arts

IPFW Department of Music

IPFW Department of Theatre

IPFW Mike Downs Center for Indiana Politics

IPFW Office of Research and External Support

IPFW Vice Chancellor for Academic Affairs

IPFW University Archives

IPFW University Relations and Communications

mDON Staff

Helmke Library Digitization Initiatives Group

Cheryl Truesdell, Chair
Judith Garrison
Daniel Lin
Judith Violette

Librarians

JoAnn Arnold
Amy Bailey
Denise Buhr
Larry Griffin
Florence Mugambi

Graphic Designers

Peter Nowak
Lea Ann Gebhard Powers

Metadata Cataloger

Jennifer Leone

Technical and CONTENTdm Support

Graham Fredrick
Kevin Fredrick
Daniel Lin



mastodon Digital Object Network

Preserving Information from Extinction!

What is mDON ?

A mastodonic collection of digital materials available **online now!**



mDON premieres with:

- ▼ Historic photographs from the IPFW University Archives
- ▼ Audio recordings of selected concerts presented by the IPFW Department of Music
- ▼ Play-by-plays from the IPFW men's volleyball winning 2005-06 season
- ▼ Community documents highlighting Fort Wayne's economic development

Coming soon are digital collections including:

- ▼ IPFW's award-winning theatre production materials
- ▼ Audio of IPFW's School of Arts and Sciences Distinguished Faculty Lecturer Series
- ▼ Maps and documents from the Allen County-Fort Wayne Historical Society
- ▼ Much, much more!

Visit: mdon.lib.ipfw.edu

